



**CASE STUDY**

## The Energy Authority



# LOW VOLTAGE OFFICE TECHNOLOGY SOLUTIONS FOR AN ENERGY MANAGEMENT FIRM

### Challenge

The Energy Authority (TEA), an energy trading and asset management firm supporting public power utilities, began its bi-location construction project intending to create a modern workspace design featuring components that improve employee wellness, streamline operations, and influence strengthened client relationships.

As a leading workplace technology services partner and trusted advisor, TEA sought Phase Integration's help in designing and managing the installation of its low voltage technologies for two locations: Jacksonville, FL and Bellevue, WA. This project required flexible support and resources to simultaneously handle Bellevue's renovation and the new construction of its Jacksonville workspace, managing various project stages occurring in different regions.

### Solution

Having the innovation to develop comprehensive workplace technology landscapes, Phase Integration customized a collaborative plan early in the renovation and construction process. Architects and designers were made aware of TEA's technology priorities, clear communication was established, and technology installation was effectively coordinated alongside the project's timeline.

### FAST FACTS

**996**

CABLE DROPS

**4**

IDF FIBER OPTIC  
CLOSET BUILD OUTS

**284**

SOUND  
MASKING EMITTERS

**29**

ENTRY AND EXIT DOOR  
SECURITY HARDWARE

**15**

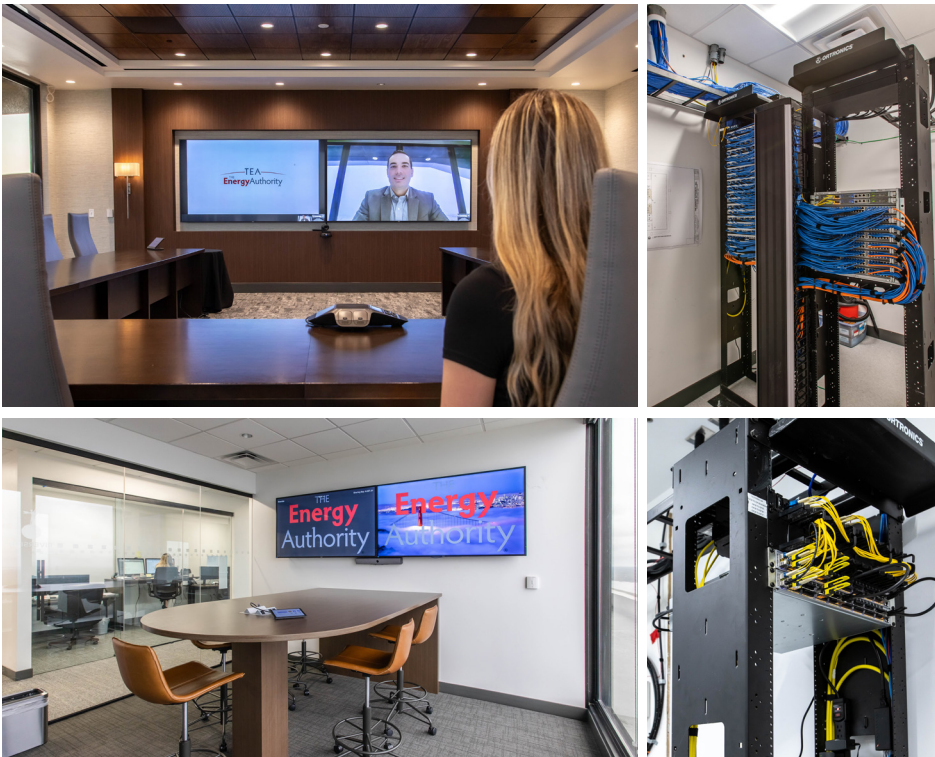
SURVEILLANCE  
CAMERAS

**20**

AV CAPABLE  
CONFERENCE ROOMS

**31**

DIGITAL  
SIGNAGE SCREENS



“Technology is very important. The Energy Authority is people and systems,” said Susan Boggs, TEA Chief People Officer. “Having a company that focuses on that one aspect and has the expertise in technology was extremely beneficial and helped us achieve our goals.”

From inception, Phase Integration tapped into an expansive network of value-driven vendors and manufacturers to provide TEA low voltage structured cabling and sound masking service, high-tech audio visual technology solutions, and integrated commercial security system design.

Seamlessly, employees visiting alternate offices can securely enter the building using touchless badge access. Plus, both offices are equipped with multi-point surveillance cameras strengthening their commercial security systems. In designing structured cabling, the fiber optic cables were uniquely concealed boarding each office level, creating an aesthetically consistent framework leading to appropriate server rooms. Installing dual LCD video displays in every conference room enables TEA employees to virtually connect via one screen and separately display content on the other.

## Results

In each location, TEA now has a fully integrated technology design improving employee convenience, comfort, and production. TEA’s workspace features the latest tech for optimum performance and flexible integration as the company continues to grow.

## KEY SERVICES



**Audio Visual  
Consulting**



**Structured  
Cabling**



**Acoustics Sound  
Masking Systems**



**Security &  
Access Control**



**Workplace  
Technology Services**



**Project  
Management**

**PHASE  
INTEGRATION**

A SUDDATH COMPANY